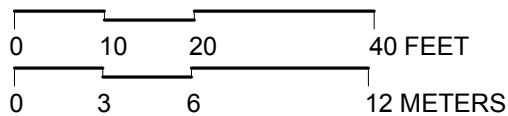
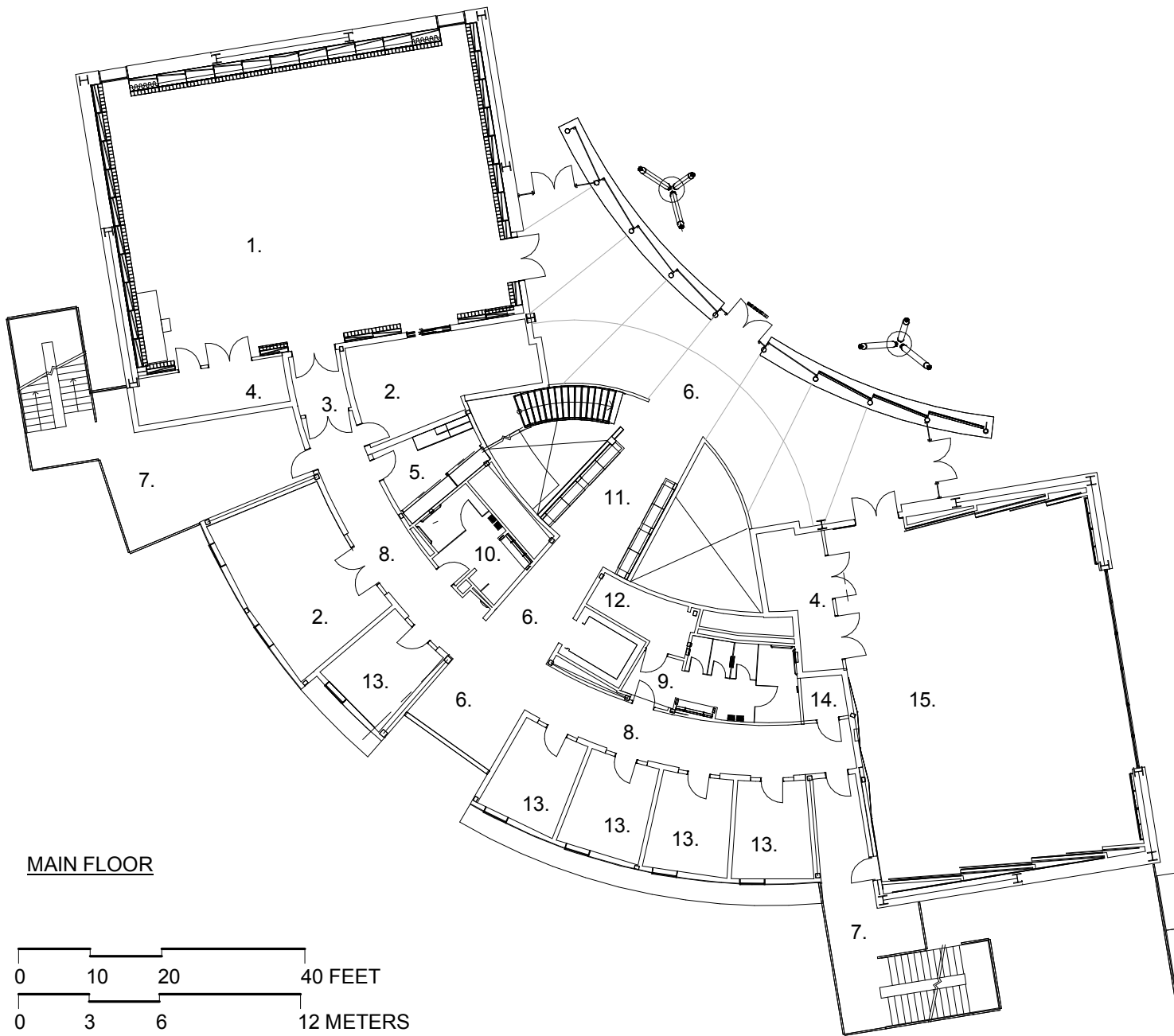


- 1. ORCHESTRA HALL (BELOW)
- 2. PRACTICE ROOM
- 3. FACULTY STUDIO
- 4. FACULTY LOUNGE
- 5. TOILET
- 6. LOBBY
- 7. ELECTRIC CLOSET
- 8. JANITORIAL
- 9. CHORAL REHEARSAL HALL (BELOW)
- 10. STAIRS
- 11. CORRIDOR
- 12. LOBBY BELOW

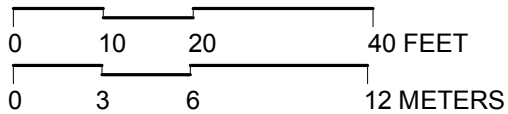
TOP FLOOR

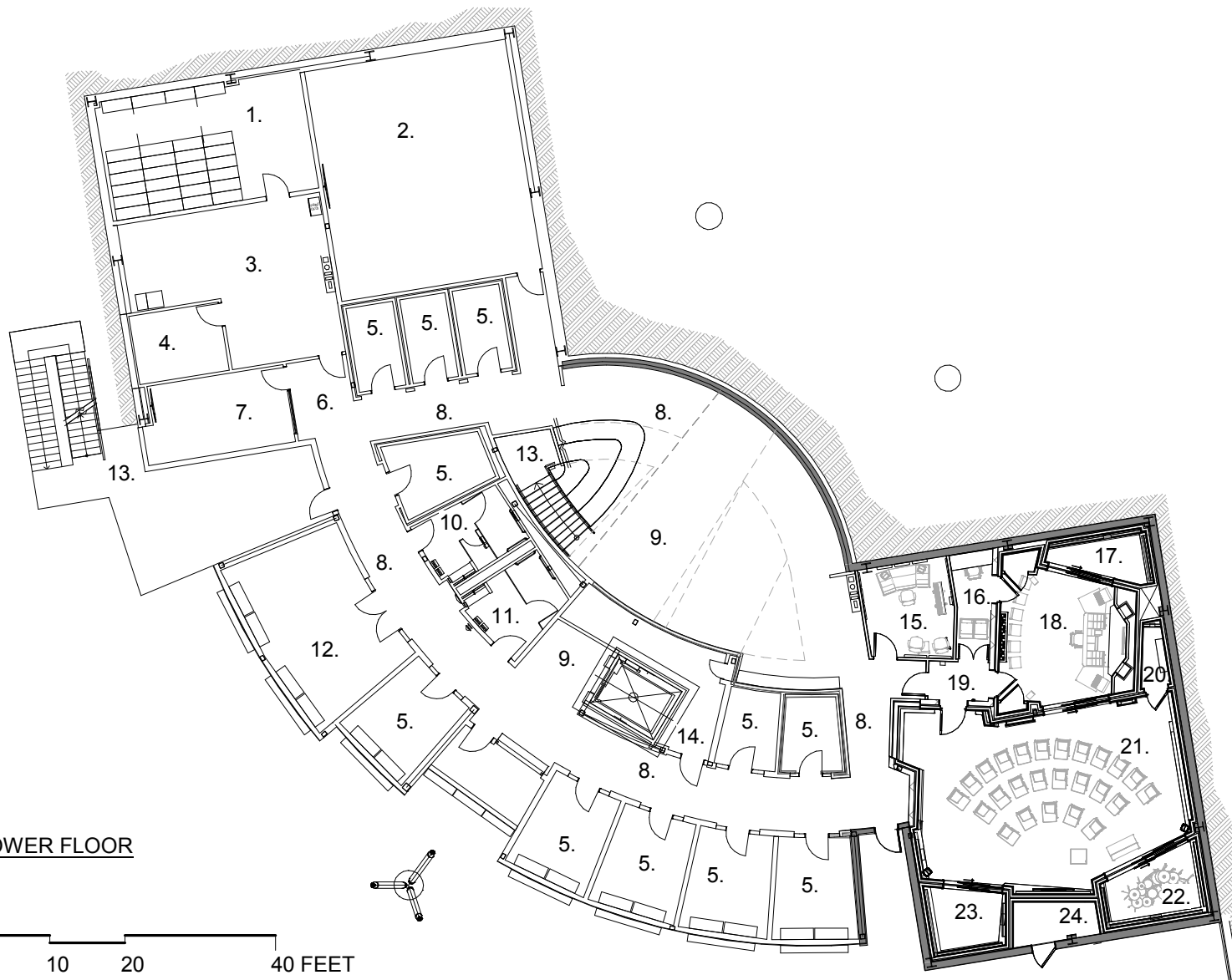




- 1. ORCHESTRA HALL
- 2. PERCUSSION PRACTICE ROOM
- 3. VESTIBULE
- 4. STORAGE
- 5. WORK ROOM
- 6. LOBBY
- 7. STAIRS
- 8. CORRIDOR
- 9. WOMENS
- 10. MENS
- 11. BRIDGE
- 12. MACHINE ROOM
- 13. FACULTY STUDIO
- 14. ELECTRIC
- 15. CHORAL REHEARSAL HALL

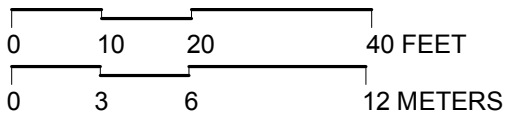
MAIN FLOOR



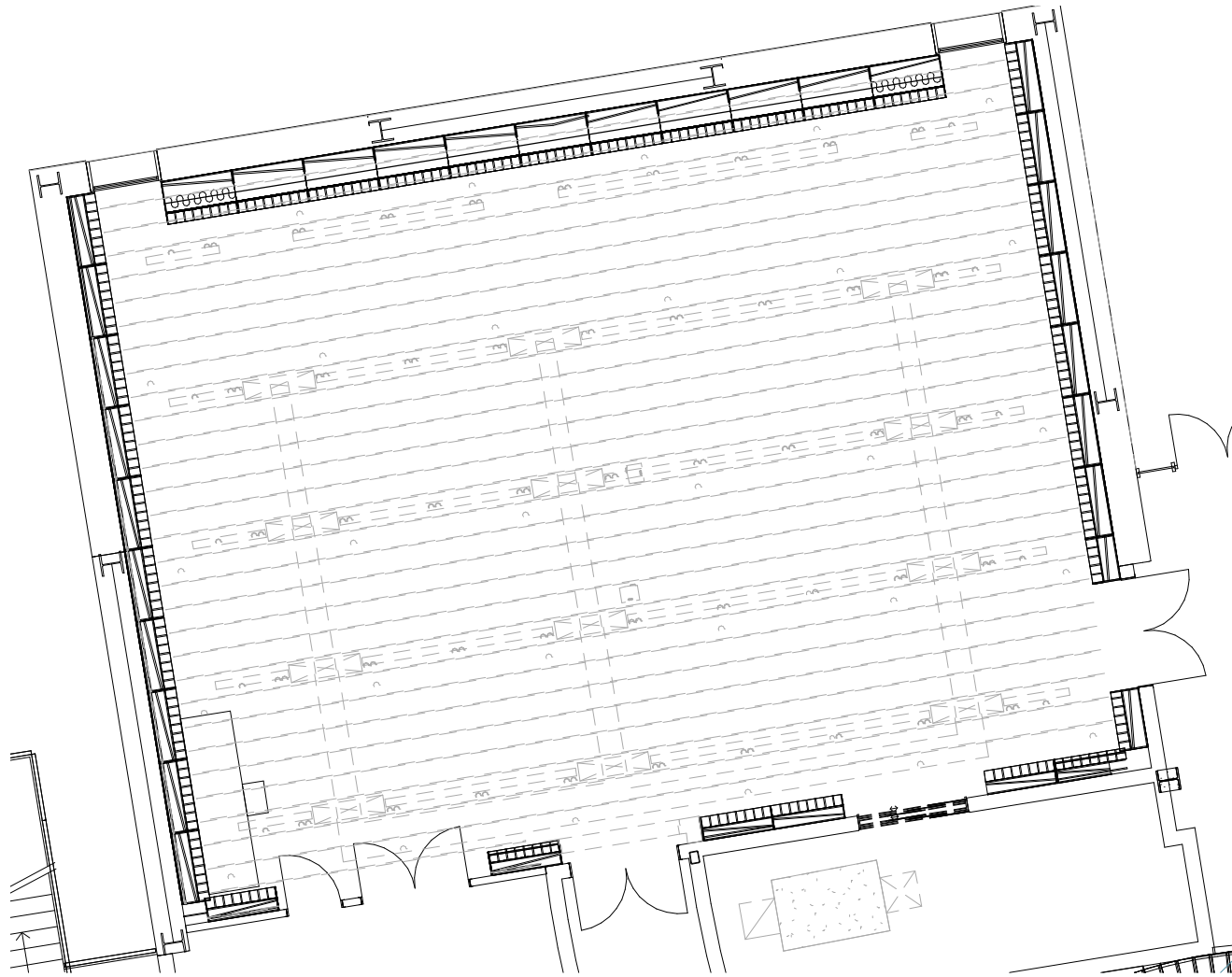


- 1. LIBRARY
- 2. CLASSROOM
- 3. OPEN OFFICE
- 4. OFFICE
- 5. PRACTICE
- 6. VESTIBULE
- 7. CONFERENCE ROOM
- 8. CORRIDOR
- 9. LOBBY
- 10. WOMEN'S ROOM
- 11. MEN'S ROOM
- 12. PIANO PRACTICE ROOM
- 13. STAIRS
- 14. SIGNAL/ELEC.
- 15. STUDIO OFFICE
- 16. AV CLOSET
- 17. ISO 1
- 18. CONTROL
- 19. SOUND LOCK
- 20. AMP CLOSET
- 21. LIVE
- 22. ISO 2
- 23. ISO 3
- 24. MECHANICAL ROOM

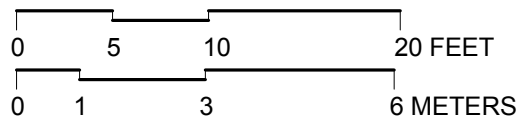
**LOWER FLOOR**



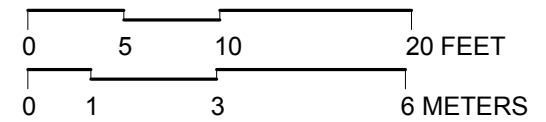
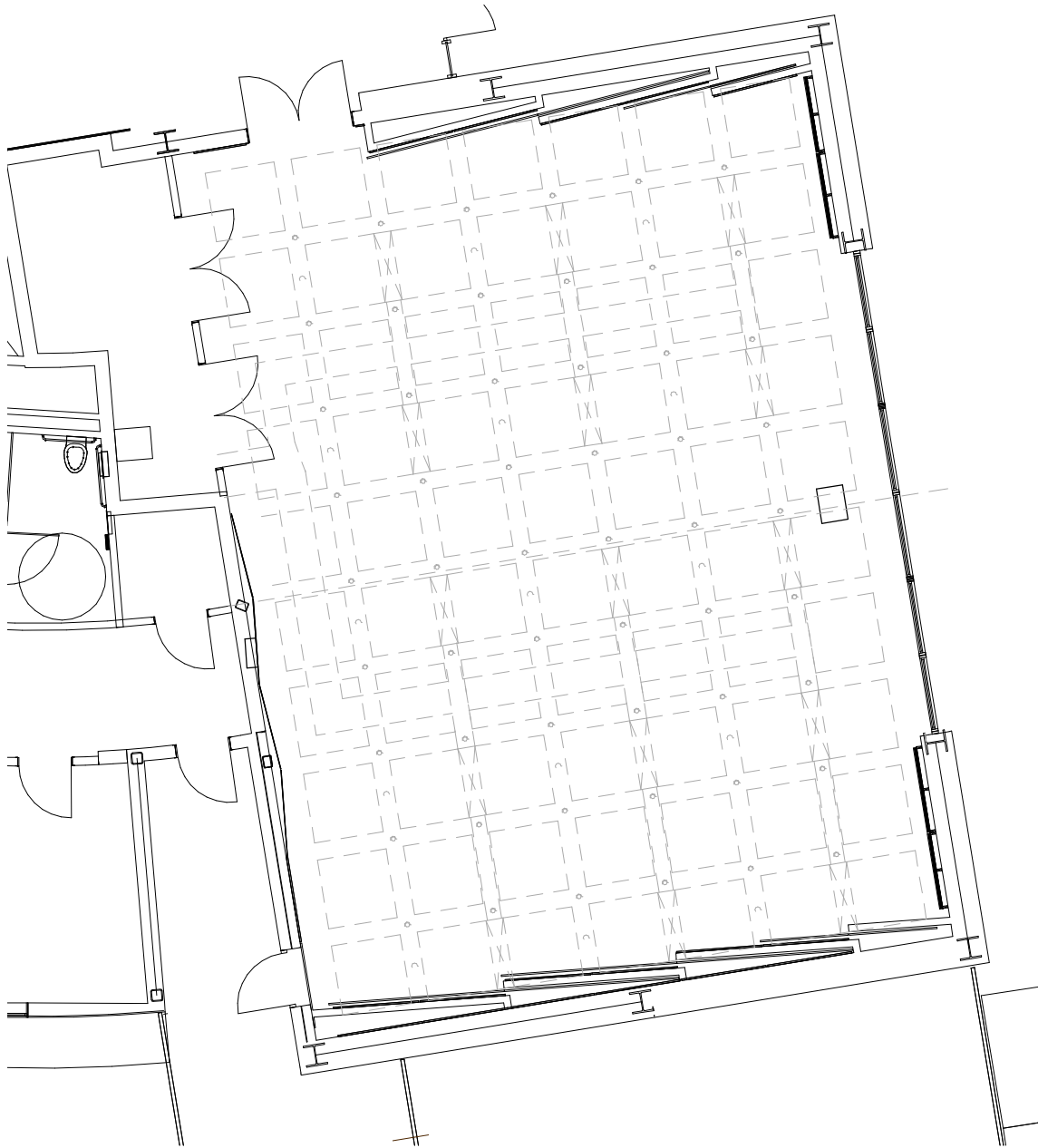
**Music, Worship, & Theology Building**  
 Concordia University, Irvine, CA



ORCHESTRA HALL



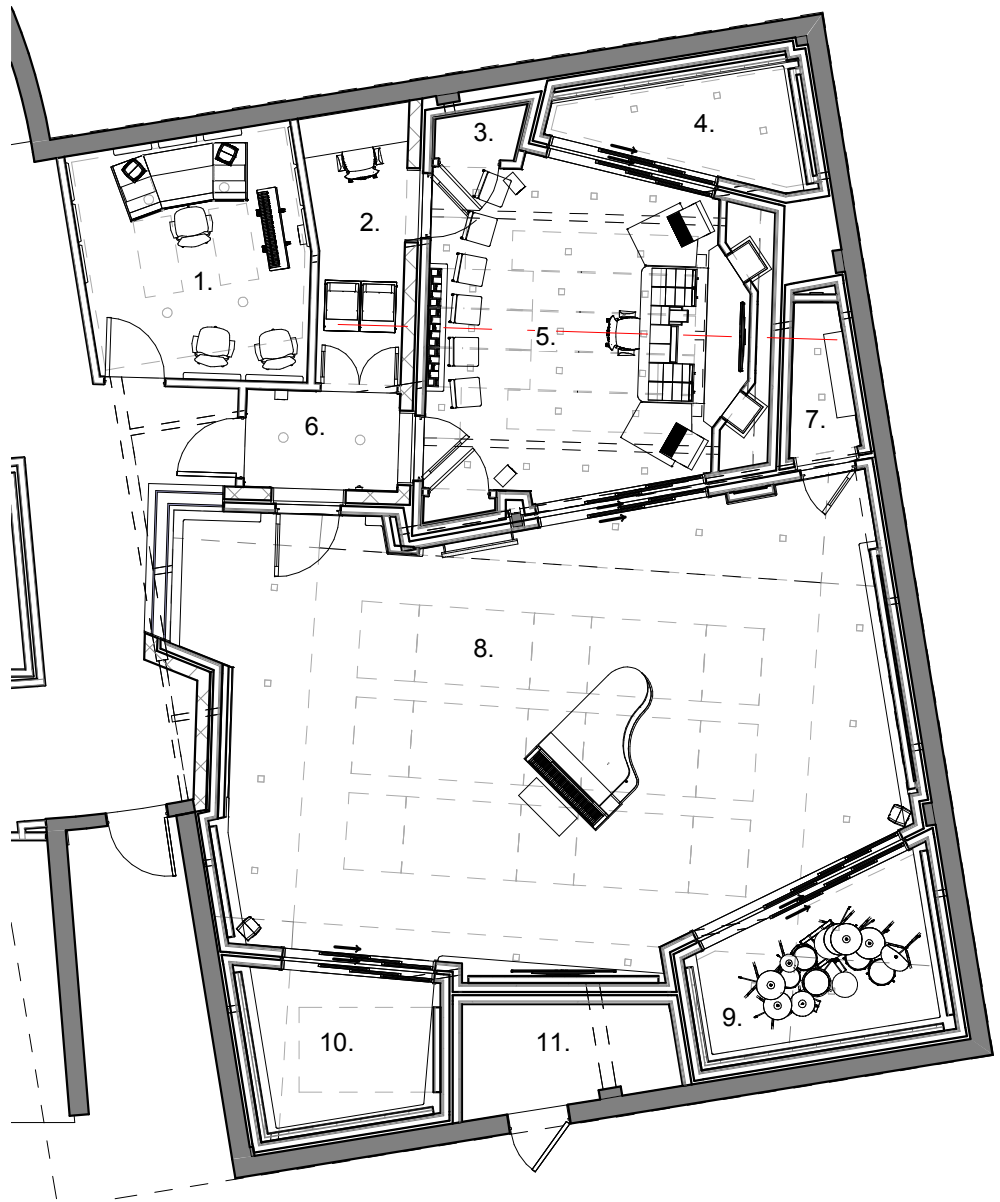
Music, Worship, & Theology Building  
Concordia University, Irvine, CA



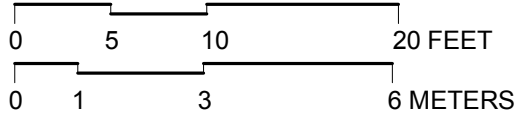
CHORAL REHEARSAL HALL



Music, Worship, & Theology Building  
Concordia University, Irvine, CA



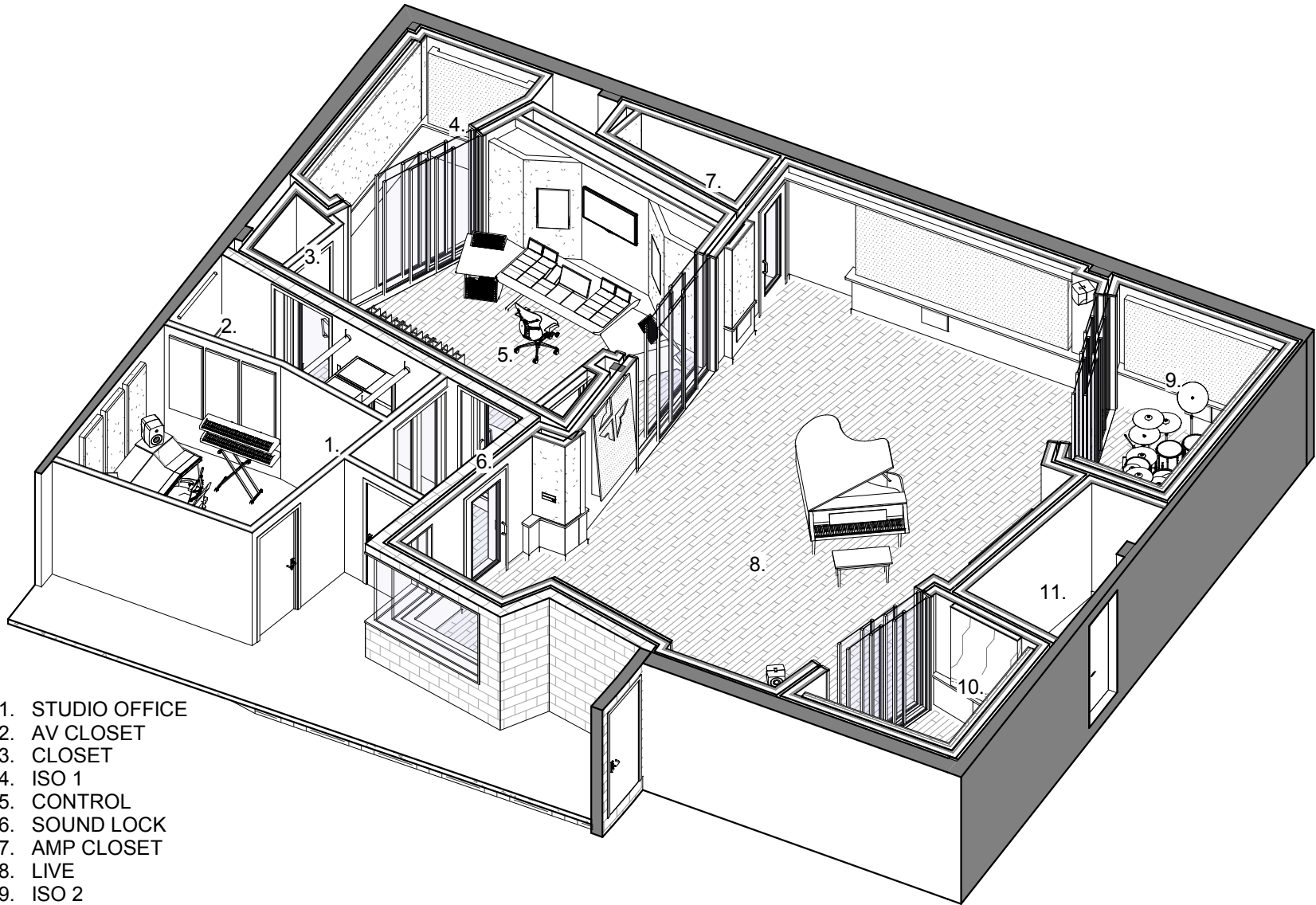
- 1. STUDIO OFFICE
- 2. AV CLOSET
- 3. CLOSET
- 4. ISO 1
- 5. CONTROL
- 6. SOUND LOCK
- 7. AMP CLOSET
- 8. LIVE
- 9. ISO 2
- 10. ISO 3
- 11. MECHANICAL ROOM



STUDIO AREA



Music, Worship, & Theology Building  
 Concordia University, Irvine, CA

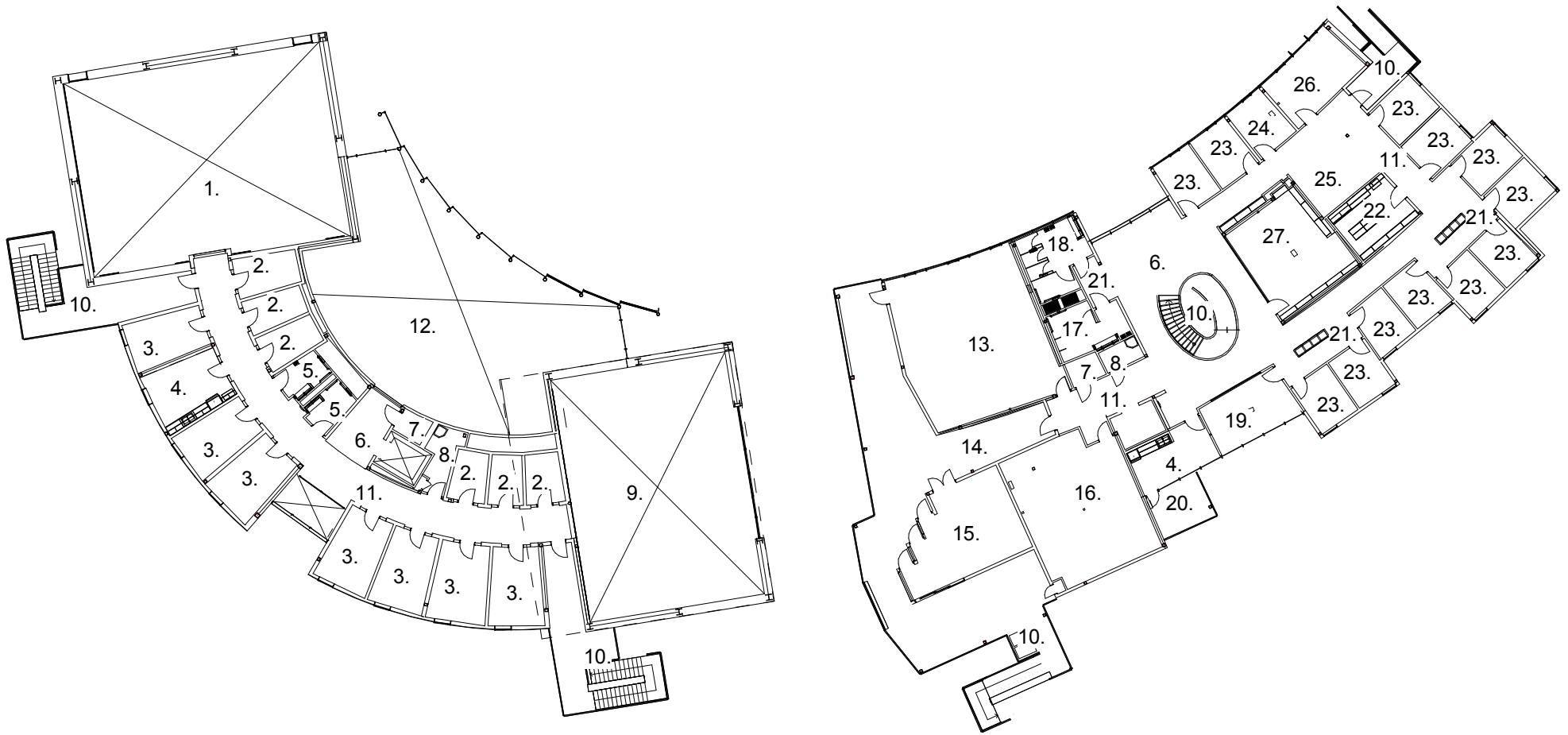


1. STUDIO OFFICE
2. AV CLOSET
3. CLOSET
4. ISO 1
5. CONTROL
6. SOUND LOCK
7. AMP CLOSET
8. LIVE
9. ISO 2
10. ISO 3
11. MECHANICAL ROOM

AXONOMETRIC



Music, Worship, & Theology Building  
Concordia University, Irvine, CA

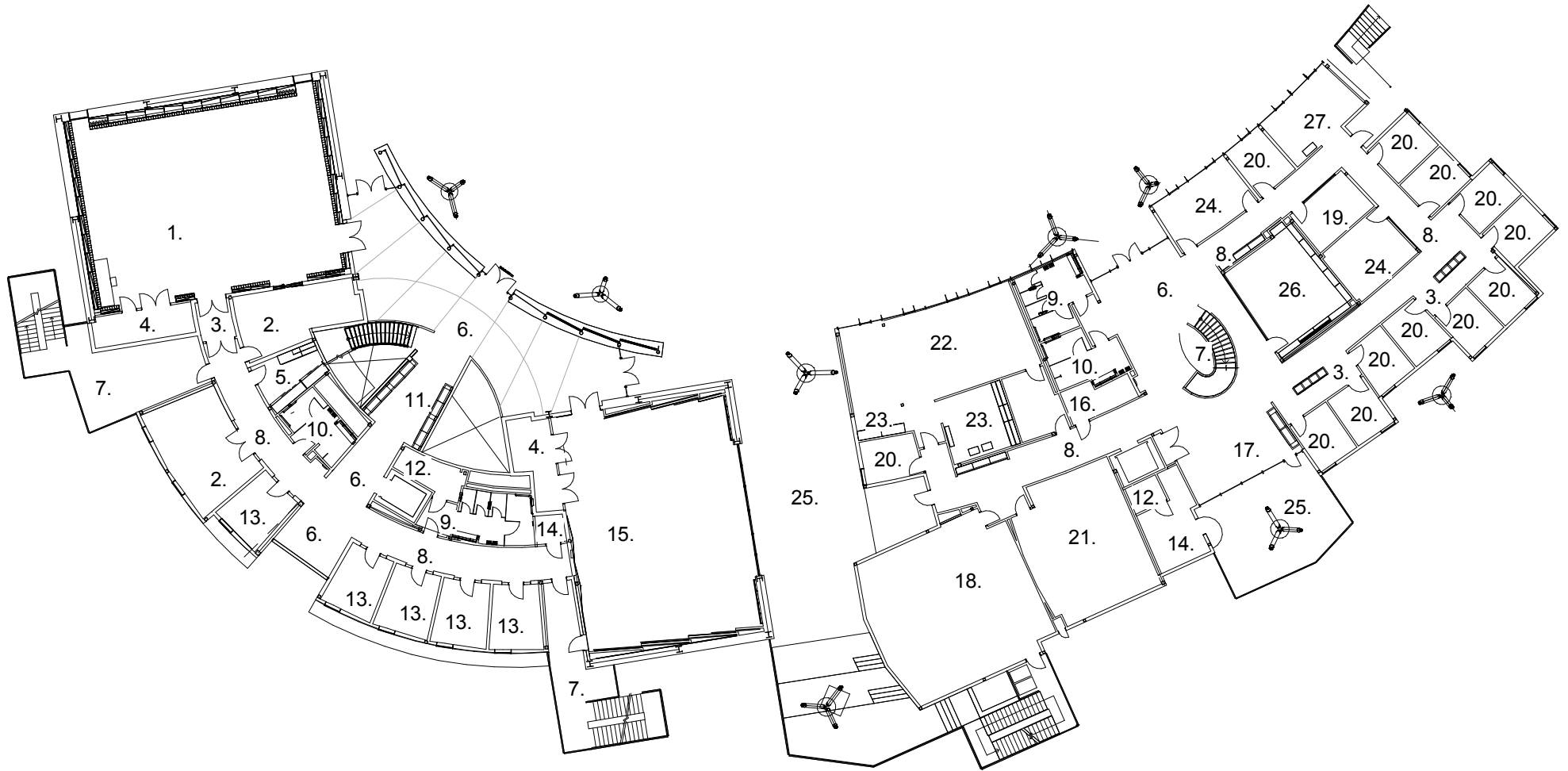


Top Floor



- |                                  |                   |                        |
|----------------------------------|-------------------|------------------------|
| 1. ORCHESTRA HALL (BELOW)        | 10. STAIRS        | 19. CONFERENCE         |
| 2. PRACTICE ROOM                 | 11. CORRIDOR      | 20. TERRACE            |
| 3. FACULTY STUDIO                | 12. LOBBY         | 21. VESTIBULE          |
| 4. FACULTY LOUNGE                | 13. CLASSROOM     | 22. WORK ROOM          |
| 5. TOILET                        | 14. DECK          | 23. FACULTY OFFICE     |
| 6. LOBBY                         | 15. FUNCTION ROOM | 24. SMALL CONFERENCE   |
| 7. ELECTRIC CLOSET               | 16. SEMINAR       | 25. ADMINISTRATION     |
| 8. JANITORIAL                    | 17. MEN'S ROOM    | 26. DEAN'S OFFICE      |
| 9. CHORAL REHEARSAL HALL (BELOW) | 18. WOMEN'S ROOM  | 27. CONFERENCE LIBRARY |





Main Floor

- |                             |                           |                          |
|-----------------------------|---------------------------|--------------------------|
| 1. ORCHESTRA HALL           | 10. MEN'S ROOM            | 19. SMALL CONFERENCE     |
| 2. PERCUSSION PRACTICE ROOM | 11. BRIDGE                | 20. FACULTY OFFICE       |
| 3. VESTIBULE                | 12. MACHINE ROOM          | 21. SEMINAR              |
| 4. STORAGE                  | 13. FACULTY STUDIO        | 22. GRAPHIC LAB          |
| 5. WORK ROOM                | 14. ELECTRIC CLOSET       | 23. GRAPHIC LAB WORKROOM |
| 6. LOBBY                    | 15. CHORAL REHEARSAL HALL | 24. CONFERENCE           |
| 7. STAIRS                   | 16. SIGNAL                | 25. TERRACE              |
| 8. CORRIDOR                 | 17. RECEPTION             | 26. CONFERENCE SEMINAR   |
| 9. WOMEN'S ROOM             | 18. CLASSROOM             | 27. ADJUNCT OFFICE       |

0 20 40 80 FEET

0 6 12 24 METERS



# Music, Worship, & Theology and Christ College Buildings

Concordia University, Irvine, CA